



CRANLEIGH PARISH COUNCIL

# NEWSLETTER

The official newsletter of Cranleigh Parish Council.

NOVEMBER 2008

Issue 10

## OUR SURVEY SAYS 'THE PARISH COUNCIL PROVIDES VALUE FOR MONEY'

In the last newsletter and on our website, the Parish Council conducted a customer satisfaction survey to find out what you thought about our services, and how these might be improved. We were also able to ascertain how widely the quarterly newsletter is received and how well the Council is communicating with local residents. It was clear that most people preferred a hard copy of the newsletter and these are available from the Parish Council office, the Locality Office or the library. A copy of the newsletter is also displayed on the Parish Notice Board at the rear of the Village Hall.

Information regarding the Parish Council can be accessed from our website on [www.cranleighpc.org](http://www.cranleighpc.org) and in the future there will be an opportunity to drop in to the Parish Office to meet with councillors one morning each month for informal questions over a cup of tea or coffee. More information regarding this will be posted on the Village Notice Board and on the website.

**The best news of all for Cranleigh Parish Council is that 100% of those surveyed indicated that they felt the Parish Council provided good value for money.**

Between 2004 and 2008, the Parish Precept rose by only 6.4%, compared with a 19.2% increase in council tax overall. This is no reflection on Waverley Borough Council, Surrey County Council or Surrey Police as their funding from central government is constrained. At Band D, the Parish Precept has increased by only £1.89 during this five-year period, less than 4p per week, while the parish Council has made significant improvements in the assets it manages and the services it provides to the community, representing excellent value for money. Although our gross annual expenditure now exceeds £340,000, we avoid major peaks and troughs in the Precept by accumulating reserves for major projects over several years

Among the many improvements effected over the past five years, we have achieved Quality Status, indicating that we have reached a benchmark standard. We have implemented quarterly newsletters; recognized the major contribution to our community of the many local volunteers with a Civic Service; initiated the annual Cranleigh Young Person of the Year award; and consistently contributed significant funding to support the Healthcheck process and the Cranleigh Initiative, with councillors giving much of their time and enthusiasm in support. In partnership with Cranleigh Village Hospital Trust, we contributed significant funding to keep the Village Hospital open and during the winter of 2005, and having provisionally agreed to a land exchange with CVHT, we continue to press for the new hospital to be built. We have supported exchange visits with both Vallendar in Germany and Semur en Auxois in France. Over many years, your councillors have organized twice yearly litter picks, and supported by many local volunteers, these are and making a huge difference to large areas of Cranleigh. Waverley Borough Council, with whom we now work in partnership to enable the disposal of the litter that has been collected, has commended this.

We have contributed to the High Street improvements in Fountain Square; and given significant grants to St Johns Ambulance for their First Responder Unit and Cranleigh Arts Centre for additional seating in the main hall and replacement central heating boilers. We have also given financial support to Hurtwood control for their continuing clearance work on the Surrey Hills Area of Outstanding Natural Beauty - an area to be



COME AND DROP IN FOR A CUP OF TEA OR COFFEE  
AND MEET YOUR COUNCILLORS.  
THE NEXT DROP IN IS SCHEDULED FOR  
WEDNESDAY 26<sup>th</sup> NOVEMBER BETWEEN 10 a.m. AND 12.00 p.m.

enjoyed by all residents of Cranleigh. We make annual contributions towards the Christmas lights in the High Street, and have given grants to the Scouts to assist with the refurbishment of their Headquarters and to Cranleigh Day Centre for a new television. In addition, donations have been made to the Royal British Legion for the Remembrance Day Service, Crimestoppers, the Cranfold Job Seekers Club, and Glebelands to support their fiftieth anniversary celebrations and for a cup to be awarded annually to the senior student giving outstanding service to the school. We have also contributed towards the setting up of FLY, an award winning service providing monthly activities for the young people in Cranleigh and the surrounding area.

We have been proud to work with Cannon Nigel Nicholson to achieve a Coat of Arms for Cranleigh to foster civic pride and enhance the community. This is now widely recognized symbol of the parish and many long-standing local organizations, reflecting the history and identity of our community. The War Memorial has been cleaned and we are currently seeking grant funding to enable repairs to be undertaken to the walls and gates of the monument. Seeking to maintain Cranleigh as a pleasant place to live and work, we have also increased the number of litter bins in various parts of the parish.

### **RECREATION GROUND**

**Unlike many parish councils, Cranleigh has its own ground staff, and this gives us a unique opportunity to provide grounds that are maintained to a very high standard and sports and leisure services which cater for the needs of the local people.**

An additional member of ground staff has recently joined us, ensuring a succession plan for senior staff and excellent services well into the future. We have invested in new machinery, including a new tractor, and old or obsolete machinery has been sold to generate income. New fencing has been installed within the recreation ground to protect the sports facilities, and this has been completed with the assistance of community service groups, allowing them to give something back to the community whilst enabling the Parish Council to control costs. We have installed new lighting columns and replaced others in the recreation ground to improve community safety and encourage greater usage. While seemingly mundane, we have provided dog and litter bins around the perimeter of Snoxhall Fields to ensure that our grounds are kept clean and tidy. Maintenance of our sports fields has been to a very high standard, attracting football teams from County Leagues and providing improved opportunities for our local clubs to field additional teams and play additional matches. We have worked in partnership with the football clubs to provide new goal posts for all four pitches. The tennis courts have been cleaned, refurbished and repainted and new nets have been purchased which will be installed ready for the 2009 season. Reflecting our responsibilities under Health and Safety regulations, all the trees in the recreation ground and the cemetery have been inspected and all necessary work carried out.

This year the Parish Council embarked on the largest project we have undertaken for many years, and we have secured a grant of £50,000 towards the provision of a Play Park for in the recreation ground. It is intended to provide a much-needed park for local residents to sit and to enjoy their surroundings and where children of all ages can be free to play and to explore. Disappointingly, the old bus shelter moved from the High Street to Snoxhall Fields for use as a Youth Shelter, while initially successful, became a target for local vandals and had to be removed. It did, however, demonstrate a need for local young people and a new shelter with solar lighting was erected in July this year, proving popular with both young and old alike.

In 2003 Snoxhall Pavilion returned to Parish Council management and extensive work has been carried out on the outside of the building as well as some important improvements inside the building. Work costing in excess of £40,000 to make the building DDA compliant is scheduled for Easter 2009. In addition the

electrical system has been upgraded, windows replaced with safety glass, an intruder alarm system installed and both cooker and refrigerator replaced.

### **COUNCIL OFFICES**

The Parish Council has worked to keep its assets as well maintained and as up to date as possible, responding to changes in technology in the office by replacing obsolete computers and installing a more modern financial system. Heating and telephone systems have been replaced and improvements made for lone working arrangements.

### **VILLAGE HALL**

Two years ago the entire floor was replaced, and more recently the building has been redecorated inside and out, improved lighting fitted in the Committee Rooms, new tables and chairs purchased, all curtains cleaned and fireproofed, the boiler replaced, and improvements made to comply with the latest Health and Safety regulations. Repairs have been carried out to the roof and 'snow catchers' installed to prevent tiles falling on passers by.

Outside the Village Hall the flowerbed, sponsored by Notcutts, has been replanted and now has an eye-catching display which gives all year round interest.

**Cranleigh Parish Council works tirelessly to support the community and give local people the local services they need. We have achieved excellent results over the past five years, and although with major increases in the cost of fuel and utilities the financial outlook is worrying, residents may rest assured that we will continue to provide excellent services while seeking to keep any increase in the Parish Precept to a minimum.**

#### **CCTV AT SNOXHALL**

The Parish Council has worked in partnership with the Local Surrey County Council Youth Worker who secured £5,000 funding from the Prince's Trust for CCTV at Snoxhall. There was a small shortfall of about £400 for the full cost for the system and the Parish Council donated this to the scheme.

The system covers the Youth Centre, Snoxhall Play Park and the Youth Shelter and has been endorsed by the Local Crime Reduction officer and local Police. Already the spate of mindless vandalism that was seen at Snoxhall over summer has been reduced.

#### **AUTUMN LITTER PICK**

A substantial number of bags of rubbish were collected by a small band of volunteers from Cranleigh when they undertook the autumn litter pick in October. The Parish Council worked in partnership with Waverley Borough Council who arranged for the bags of rubbish to be collected and disposed of immediately after the litter pick.

It is hoped the next litter pick will take place in Spring 2009. If anyone is interested in joining in with the litter pick or has any comments please contact Pauline Whitehead at the Parish Council Office.

### **YOUR VIEWS ARE IMPORTANT**

Contact any of the Parish Councillors shown in the listing with your views on the items in this edition of the Cranleigh newsletter or on local issues bothering you, or write to  
Cranleigh Parish Council

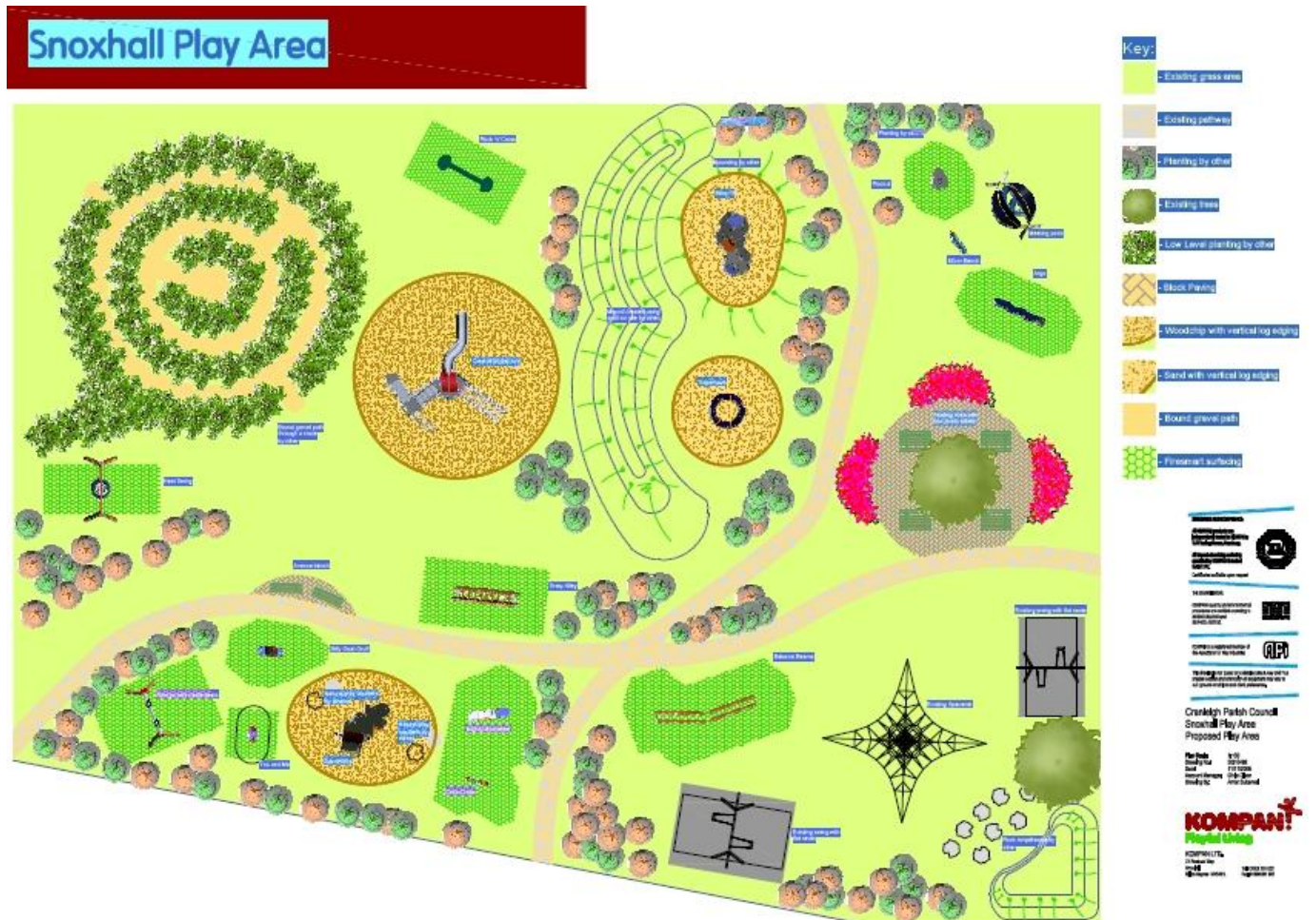
Village Way, Cranleigh, Surrey, GU6 8AF

For more information about the Council please contact [www.cranleighpc.org](http://www.cranleighpc.org) which is linked to the Cranleigh Village website.

## SNOXHALL PLAY PARK – A PARK FOR THE FUTURE

The Parish Council is delighted that the construction of Snoxhall Play Park has started. Plans for the enhanced Play Park were agreed at the Parish Council Meeting in September 2007 and the project was given a boost earlier this year when it was announced that, working in partnership with Waverley Borough Council, the Parish Council had been awarded £50,000 Big Lottery funding. This will allow the first phase of the scheme to be completed. The completed drawings are hot off the press and will be taken to the November Parish Council Meeting for their final approval.

The Parish Council hope that Snoxhall Play Park will be not only for children, but a park environment that can be used by all members of the community. This is why the first phase lays great emphasis on providing an area with several different levels, landscaped with educational and sensory planting. Research has indicated that it is important for young people to be given a free environment to choose non-directed activities and this is the basis for the Snoxhall Play Park.



Developed plan of Snoxhall Play Park.

The Parish Council is aware that any help given to this venture will allow more facilities to be provided for the community, and we are therefore very proud that the Community Services are associated with the project and have installed all of the fencing. This enables those who have committed offences to give something back to society and in doing so they have saved the Cranleigh community over two thousand pounds in construction charges. Pathways have been constructed and initial landscaping undertaken, and it is hoped that once turf has been laid, the Play Park will be opened, although there will be a need for some areas to be closed off on a regular basis as continued work takes place.

The work is already six months ahead of schedule due to the commitment of the Community Services and the contractors working on the project.

On November 20<sup>th</sup> Glebelands will be planting the first of fifty trees to be planted throughout Cranleigh in Snoxhall Play Park, marking the fiftieth anniversary of the school. Six of these have been given to the Snoxhall Play Park project. Some of the trees will have burgundy foliage to reflect the school colours and it is hoped that eventually there will be a plan of where all fifty trees are sited so that it can form the basis of a Cranleigh trail.

Two new pieces of equipment will be installed this year. The 'Rock and Cross' is supplied by Monster and is an innovative non-traditional seesaw type piece of play equipment with an internally sprung arc that simulates the rocking motion of a normal see saw. With the addition of handholds on the upper part of the arc, additional riders can join in the fun. It is well engineered using robust materials. It meets play value elements in terms of rocking, swinging, experimenting, training and gathering. It will be installed on either safer grass matting or loose fill safer surfacing. The Rock and Cross was agreed by the Big Lottery Fund as it is inclusive for several age groups, can be used singly or by a group of young people, and can be used in many ways.

The second piece of equipment is a nest swing which is one of the most recognisable and used pieces of equipment in a playground, but makes it a social event too. The nest swing encourages cooperation as this is the key to making the nest swing move. Play elements swinging and gathering are both met by the nest swing. The Big Lottery Fund has agreed this as it takes into account local consultation which indicated that more swings were needed in the Play Park. The nest swing is inclusive for young people with all abilities and it can be used exclusively by one person or by a group of people. The nest swing that has been chosen will be sympathetic to the design of the other swings at Snoxhall play park and be of the type having the smallest 'footprint' to allow best use of space. It is envisaged that the swing will have landscaping surrounding it to provide protection from other park users and it will be installed on safer grass surfacing so that it will be DDA compliant.

While the Parish Council is keen to undertake the work as quickly as possible, it must be remembered that this is a living project and the plan has been phased over the next five years. This phasing allows new equipment to be introduced on a regular basis, and will provide continued interest and ensure that the park does not become dated.

The Parish Council is being helped in this project by the Action for Cranleigh Play Park Association who are raising funds towards the next phase of the project. Originally the project was expected to cost in the region of £124,000, but the Youth Shelter, which was part of the original project, has been funded early by the Parish Council, thereby reducing the overall cost.

The Action for Cranleigh Play Park Association has already raised £1,400 towards equipment and the Cranleigh Baptist Church has raised £330 by organising a sponsored toddle. The Parish Council very much appreciates the work done by the Action for Cranleigh Play Park Association, and its Chairman Mrs Sue Dale who has worked tirelessly and organised several events. If anyone is interested in joining the Action for Cranleigh Play Park Association please contact the Parish Council and your details will be forwarded.

<u>Contacts</u>	<u>Cranleigh Parish Councillors</u>		
<p><b>The Clerk – Pauline Whitehead.</b>  <b>Parish Council Offices, Village Way,</b>  <b>Cranleigh GU6 8AF</b>  <b>Telephone - 01483 272311</b>  <b>Website: - <a href="http://www.cranleighpc.org">www.cranleighpc.org</a></b>  <b>e-mail <a href="mailto:adminclerk@cranleighpc.org">adminclerk@cranleighpc.org</a></b></p> <p><b>Waverley Borough Council, The Burys,</b>  <b>Godalming, GU7 1HR</b>  <b>Telephone - 01483 5233</b>  <b>Website:- <a href="http://www.waverley.gov.uk">www.waverley.gov.uk</a></b></p> <p><b>Surrey Police</b>  <b>Telephone - 08451 252222</b>  <b>Website: <a href="http://www.surrey.police.uk">www.surrey.police.uk</a></b></p> <p><b>Waverley Borough Council Locality Office</b>  <b>Leisure Centre, Village Way, Cranleigh</b>  <b>Telephone - 01483 277399</b></p> <p><b>Surrey County Council,</b>  <b>General Enquiries,</b>  <b>Telephone - 08456 009009</b>  <b>Website:- <a href="http://www.surreycc.gov.uk">www.surreycc.gov.uk</a></b></p> <p><b>Graffiti Hotline</b>  <b>Telephone 01483 523425</b>  <b>Website:- <a href="http://GraffitiHotline.co.uk">GraffitiHotline.co.uk</a></b></p>	NAME	TELEPHONE	WARD
	Cllr Brian Arendell	01483 273204	Rural
	Cllr Cyril Baily FCA	01483 278471	Elmbridge
	Cllr John Bainbridge FCA	01483 275949	West
	Cllr Brian Cheesman	01483 273293	East
	VICE CHAIRMAN		
	Cllr Mrs Jean E Dodd	01483 278184	East
	Cllr B Ellis	01483 272929	West
	CHAIRMAN		
	Cllr Mrs Patricia Ellis	01483 272929	West
	Cllr Mary Forsyszewski	01483 273020	North
	Cllr David Gallacher	01483 280835	East
	Cllr Mrs Rosemary Hurtley	01483 272052	East
Cllr Ken T Reed	01483 271896	East	
Cllr Stewart Stennett	01483 275038	West	

Parish Council Meetings are held in the Council Offices, in Village Way on the third Thursday of every month with the exception of August. Meetings start promptly at 7.00pm with the first fifteen minutes available for members of the public with a legitimate interest in the Parish to pose questions about the work of the Council to the councillors.

The next Parish Council meetings are scheduled for: **Thu 18<sup>th</sup> December 2008 and Thursday 15<sup>th</sup> January 2009.**

The next Planning meetings are scheduled for ; **Mon 8<sup>th</sup> December 2008 and Monday 5<sup>th</sup> January 2009**

Agendas and minutes are available on our website at : **[www.cranleighpc.org](http://www.cranleighpc.org)**

For Advanced notice of all meetings check the Parish Notice Board behind the Village Hall or contact the Parish Council office on 01483 272311.

**MEMBERS OF THE PUBLIC ARE WELCOME AT ALL PARISH COUNCIL AND COMMITTEE MEETINGS**

For more information about the council please contact [www.cranleighpc.org](http://www.cranleighpc.org) which is linked to the Cranleigh Village website.

Editor – Pauline Whitehead MILCM, Clerk to the Council.

Available from, the Parish Council Offices, Locality Office, Library, Village Hall, Arts Centre and downloadable from the website [www.cranleighpc.org](http://www.cranleighpc.org). A copy is displayed on the Parish Notice Board